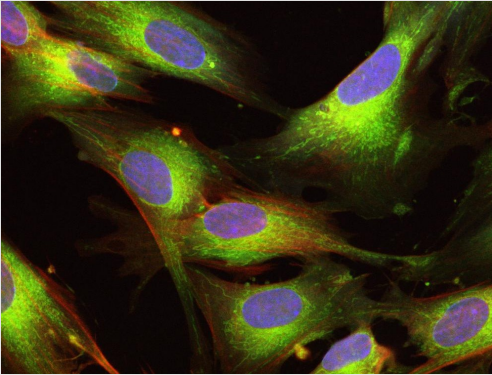


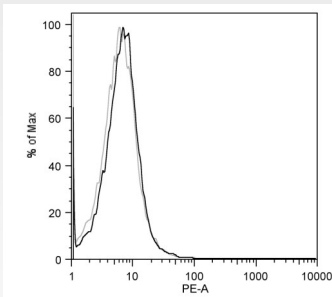
## Human Amniotic Membrane Mesenchymal Stem Cells



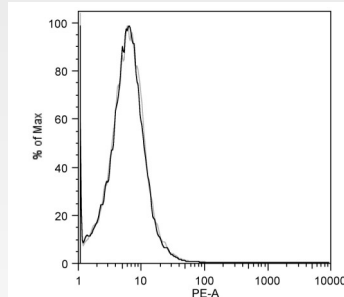
Human amniotic membrane mesenchymal stem cells are harvested after the amniotic membrane has been stripped of amniotic epithelial stem cells. The membrane is then digested enzymatically and mesenchymal stem cells are released. These cells have a variety of applications but are best suited for animal studies involving graft versus host responses and tissue differentiation into hepatocyte like cells.

### Ordering Information

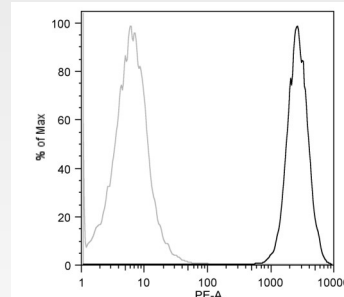
CET Catalog #	Quantity
HMSC.AM-100	100,000 cells
HMSC.AM-500	500,000 cells



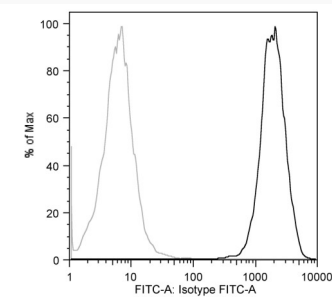
CD14-



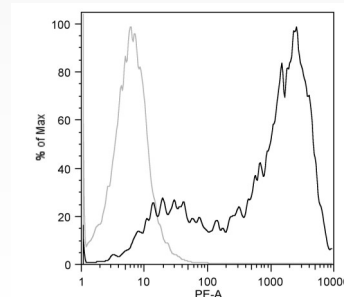
CD45-



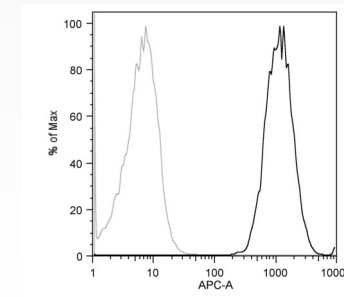
CD29+



CD44+



CD90+



CD105+

All CET stem cells are characterized and tested with a panel of known stromal, stem and hematopoietic markers. Each cell type is analyzed by flow cytometry to ensure >95% purity. All stem cells test negative for HIV-1, HIV-2, Hepatitis B and Hepatitis C.